

AIR SHIELD — "S" SERIES FLAME

The Net Safety Air Shield is designed to enhance the accuracy and reduce the maintenance of Net Safety's line of flame detectors. It is an ingenious time and money saving accessory that is strongly recommended for use in conjunction with Net Safety flame detectors that are installed in environments where a heavy presence of airborne contaminants are present.

The Air Shield negates the need for frequent cleaning of the detector's viewing window. By supplying a constant flow of clean air across the outside surface, the shield keeps it free from accumulation of various material, thus reducing contamination build up.



DIMENSIONS	Width: 8.13cm (3.2") -- Height: 0.66cm (0.25") -- Depth: 7.37cm (2.9")
AIR REQUIREMENTS	1/8" hose or tubing with clean 'Instrument Air' for airflow
MINIMUM AIR FLOW	Smoke or Air Particulate: 0.5 SCFM@10psi Mist Particulate: 2.0 SCFM@20psi Oil Particulate: 3.0 SCFM@30psi*
CONE OF VISION IMPEDANCE	0 at 360 degrees
OPERATING TEMPERATURE	-50°C to +150°C (-58°F to +302°F)
FINISH	Powder Coated

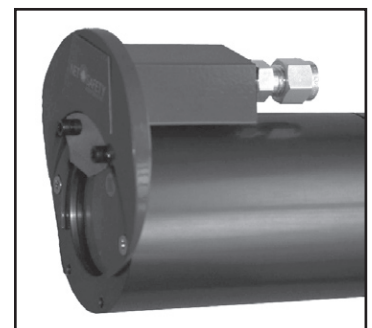
* The above are recommended guidelines. Higher flowrates at lower pressure will result in the same consistency of air buffering.

The Air Shield is intended for use on all NSM "S" Series flame detector housings. The Air Shield device requires the following tools:

1. HEX Nut Screw Driver.*
2. 1/8" NPT hose or tubing

The Air Shield is installed directly onto the housing, preferably on the top end of the housing so that water or other particulate may not settle into the plenum airway if the air is not on. Optical reflectors (see application picture at right) will need to be removed and then reinstalled on top of the Air Shield device. It is extremely important that the reflector is mounted into the centre of the Air Shield. If it is not, it will cause vortexes from the outflow of the device.

Make sure the reflector that was on the housing is installed into its original screw holes facing the proper direction. Incorrectly installing the reflector will impede the operation of the optical integrity circuit of the unit. Insert the tubing or hose into the 1/8" NPT fitting and turn on the air.



* Hex screw - 6-32 UNC x 3/8" LGTH stainless steel. If you require assistance, please contact your local distributor.

BCR-0015-00-002